

**INFORMATION BULLETIN**

No. M 337/62

Replaces the bulletin No.M 337/59 which is hereby cancelled.

REFERS TO: Modification of the engine M 337 with the purpose to make its starting easier.**REASON:** Ensuring easy starting of the engine M 337 in extraordinary hot conditions.**MEASURE :** Referring to "DET.2" (see Fig.) remove the screwed fitting Sc 1520 and apply the "Valve of increased pressure Sh 0043" into the original thread. Replace the nut Sc 1521 with the "Cap nut M 14x1.5 ČSN 137968.31". Replace all 3 sealing rings with "Sealing rings 1060271". After having made the cap nut M 14x1.5 tight, secure it with a wire to prevent its loosening.

Referring to "DET.1" (see Fig.) remove the sealing screw M 12x1.5 ČSN 313802.31 and the gasket ring 12x16 ČSN 02 9310.3 and screw the screwed fitting Sc 1035 into the original thread. Screw the hollow screw Sc 1517 into the screwed fitting Sc 1035 thus fastening the "Opening of pressure oil supply to manometer Sh.1591", and two "Gasket rings 8x12 ČSN 029310.3". After having made the hollow screw Sc 1517 tight, secure it in its place by means of a wire.

The oil pressure during the engine operation is picked up from the "Opening of the pressure oil supply to the pressure gauge Sh 1591".

Ordering list of details for modification of the engine:

1 pc Sc 1035	1 pc Sh 0043
1 pc Sc 1517	1 pc M 14x1.5
1 pc Sh 1591	ČSN 13 7968.31
2 pcs 8x12 ČSN 02 9310.3	3 pcs 1060271

EXECUTION OF THE MEASURE:

Replacement shall be carried out by the customer.

PAYMENT OF COST:

Cost shall be paid by the customer - based on the order of the increased pressure valve.

DELIVERY OF REQUIRED PARTS:

The required new parts shall be supplied by the manufacturer on the basis of order.

Letňany, March 6, 1969.

Miloš Adamec m.p.

Manufacturer's representative

Ing. Homola m.p.

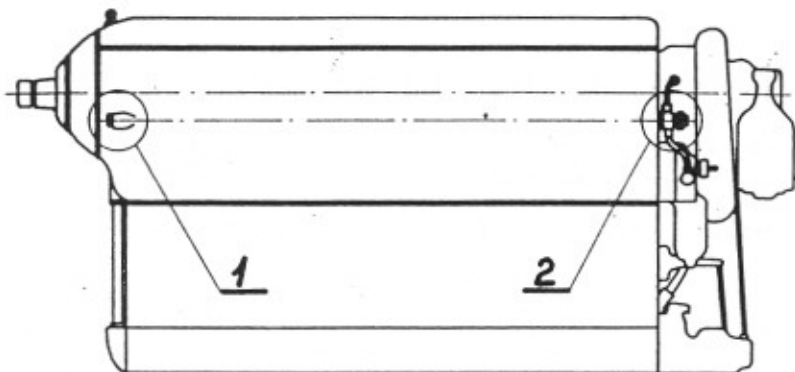
Customer's representative

Ing. Miroslav Kohout m.p.

State air inspection

Ing. Jirouš m.p.

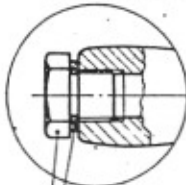
OMNIPOL



STARÉ PŘEVEDENÍ
6W80 - PRIMARY

DET. 1

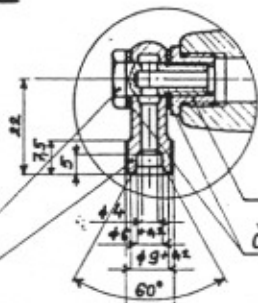
NOVÉ PŘEVEDENÍ
CT800 - PRESENT



M12x45
ČSN 313802.31
12x16
ČSN 029310.3

Sc 1517

Sh 1591



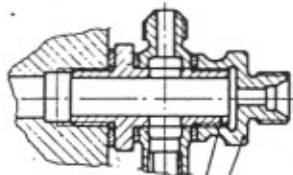
Sc 1035

8x12
ČSN 029310.3

6W80 - STARÉ PŘEVEDENÍ - PRIMARY

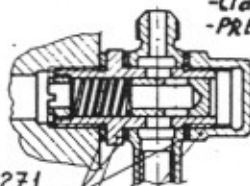
DET. 2

NOVÉ PŘEVEDENÍ -
CT800 - PRESENT



Sc 1520

Sc 1521



1060271

Sh 0043

M14x45
ČSN 137968.31